

End of the Game

When the last Present is drawn from the bag, that player finishes their turn as normal. Then each player may swap one Present and give one Present, if they want to. The party is now over!

If each princess has all 6 of her presents at the end of the game, all players win!



Contents: 7 Disney Princess Cards, 42 Present Tiles, Cloth Bag, Spinner, Instructions

Funko
GAMES
funkogames.com

©Disney

©2021 Funko, LLC. All trademarks and registered trademarks are the property of Funko, LLC or are the property of their respective owners. All rights reserved.

WOe01

Ages 3+

2-4 Players

Disney
PRINCESS

Princess Present Party Game



Contents

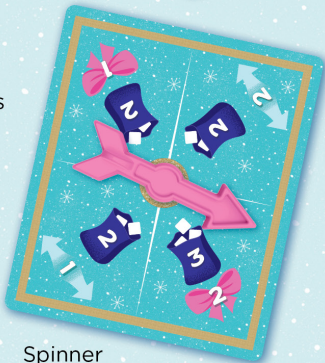


7 Disney Princess Cards



42 Present Tiles

Cloth Bag



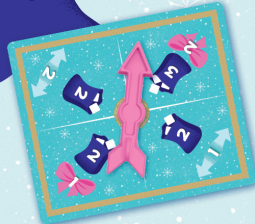
Spinner

Set Up

- 1 Each player chooses a Disney Princess card and takes the 6 Present tiles matching that princess.
- 2 Take 10 of the remaining Presents — it doesn't matter which ones.
- 3 Place the Presents (6 per player + 10 extra) in the bag and shake it up.
- 4 Put any remaining Presents back in the box. They won't be used this game.
- 5 Each player draws one Present from the bag.
- 6 Give the spinner to the youngest player. They take the first turn!



Add 10



Object

There are six gifts for everyone at the party — but they're all mixed up! Work together to sort the jumble of presents before the end of the party. All players will win or lose together!

On Your Turn

Spin the spinner and do the two things you spun:



Draw that many Presents from the bag and place them in front of you with the Present side up.



Swap that many Presents with another player. If you swap two, you may swap both Presents with the same player or with two different players.



Give that many Presents to another player. If you give two, you may give both Presents to the same player or to two different players.

Important: You do not have to swap or give away Presents that match your Disney Princess.

Now it's the next player's turn!